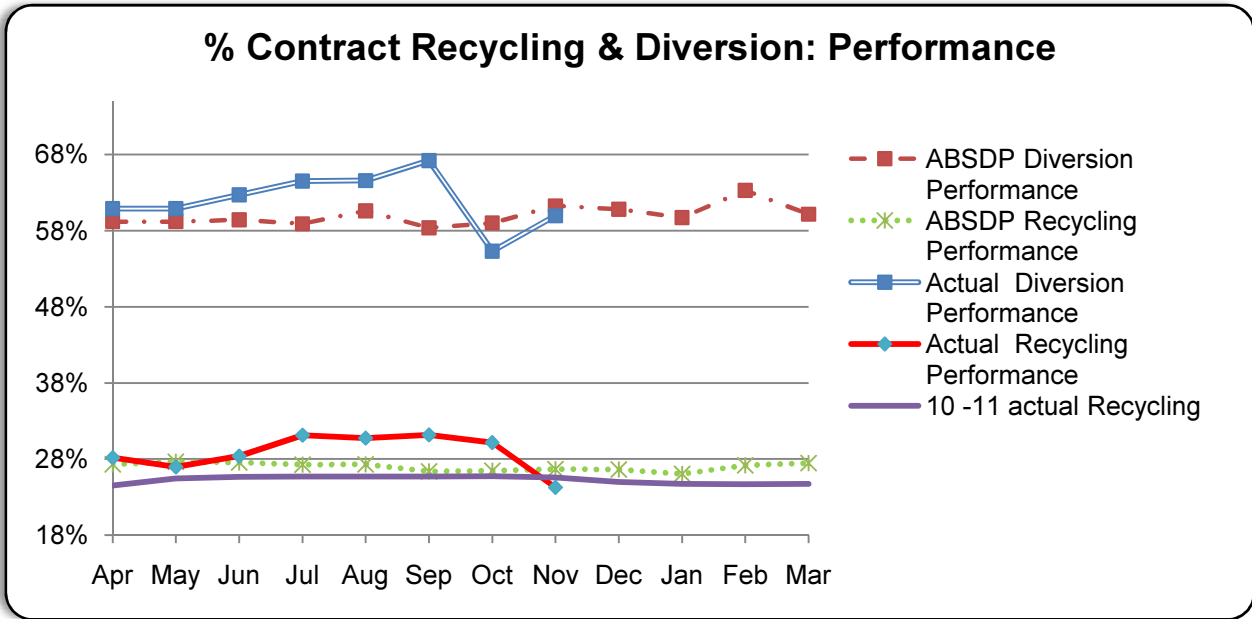


	Nov Data	Cumulative
Barking & Dagenham	26.8%	32.9%
Havering	34.8%	37.3%
Newham	19.2%	24.0%
Redbridge	27.5%	35.4%
ELWA	27.1%	32.4%

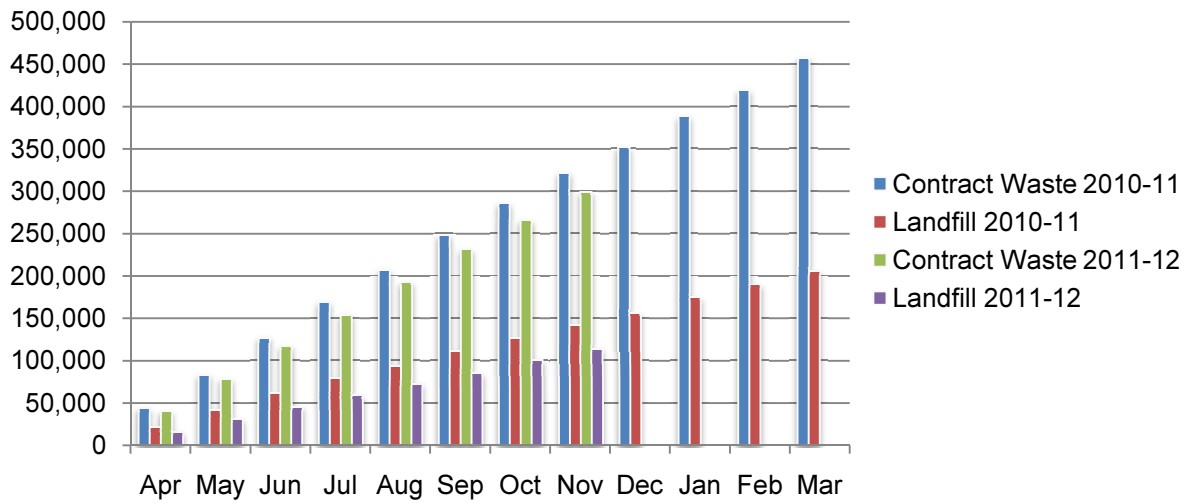
Performance above is set against the current target. Performance below is set against the current target. Performance above is set against the current target. Performance below is set against the current target.



	Nov Data	Cumulative	ABSDP
Actual Recycling Performance	24.3%	29%	28.7%
Actual Diversion Performance	60.0%	62%	60.3%

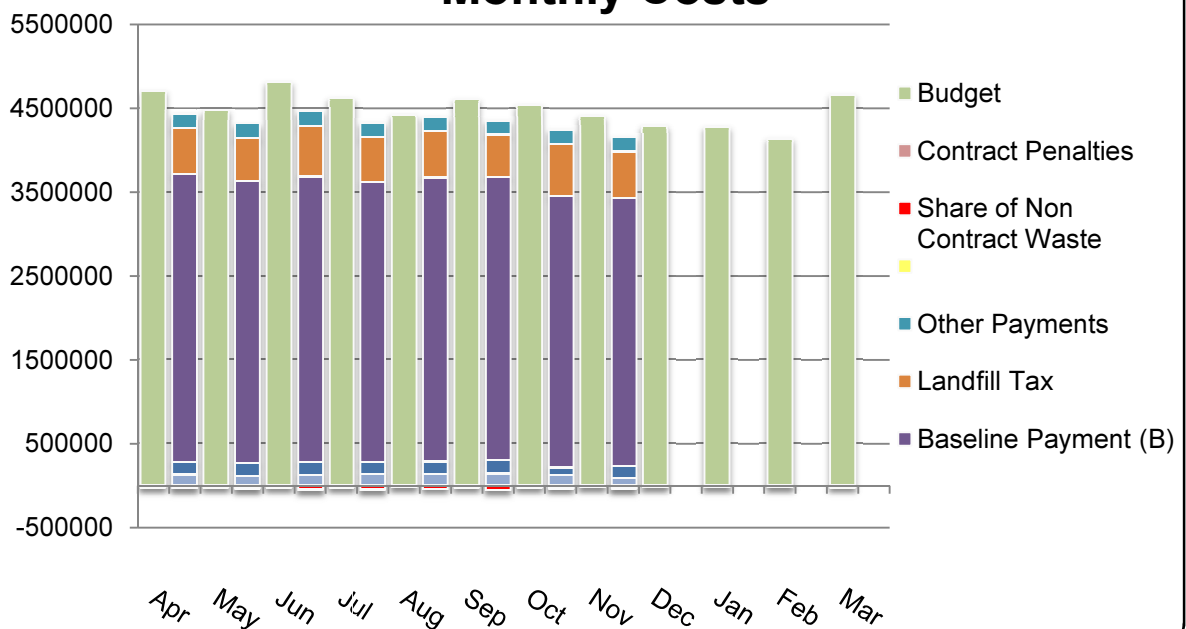
Performance below is set against the current target. Performance above is set against the current target. Performance below is set against the current target. Performance above is set against the current target.

Tonnages



	Nov Data	Cumulative	ABSDP
Contract Waste	33,830 tonnes	298,987 tonnes	325,197 Tonnes
Recycling	8,206 tonnes	86,434 tonnes	
Diverted from Landfill	12,078 tonnes	185,310 tonnes	
Landfill	13,545 tonnes	113,677 tonnes	

Monthly Costs



	Nov Data
Budget	£4,376,313.
Actual	£4,105,544.